

# EAGLE TRAFFIC CONTROL SYSTEMS

A DIVISION OF  **BROWN**  
Traffic Products, Inc.

## Model Size R Cabinet Assembly *NEMA Specification*

### Description

The Eagle Size R cabinet protects electronic components including controllers and other instruments. It also features an aluminum enclosure for protection from all forms of outdoor natural elements, including rain, sleet, and snow, as well as seepage and splash.

### Features

- Inward rotating door handle
- Double-flanged door frame to provide a better splash shield.
- 3/16" diameter hinge pin
- Unique lock keying combinations.
- Custom painting per customer requirements.
- Special fan mounting and air filters available.
- Lifting ears



## Cabinets by Eagle Traffic Control

### Door Specifications

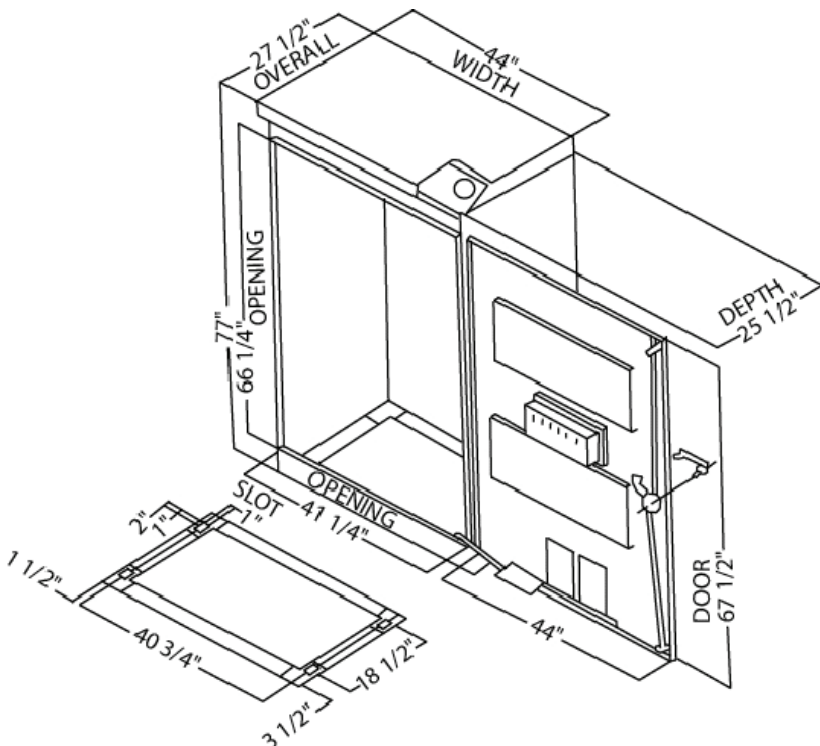
- Provided with three-point locking mechanism with nylon rollers.
- $\frac{3}{4}$ "-diameter stainless steel outward turning handle with provisions for padlocking.
- Main Door lock - industrial standard pin tumbler lock with #2 key.
- Louvered inlet with filter to prevent dirt from entering with air flow.
- Closed-cell neoprene door seal gasket used.
- Heavy gauge stainless steel continuous hinge utilizing a non-removable  $\frac{3}{16}$ "-diameter stainless steel hinge pin for door support, carriage bolted in place, for ease of door removal.
- A 2"-deep, fabricated switch compartment is included with a standard "police" lock and an 18-gauge stainless steel continuous hinge with a  $\frac{1}{8}$ "-diameter hinge pin riveted in place. Compartment is mounted flush to the door.

### Ordering Information

- EL720 - Base Mount
- Order 1 (set of 4) anchor bolts.
- UA242, if required

### Dimensions and Enclosure

- Completely fabricated from .125"-thick type 5052-H32. Vinyl-coated, mill-finished aluminum utilizing intermittently welded construction, subsequently weatherproofed with silicone sealant.
- Internal attaching components include
- six (6) adjustable "C" mounting channels (3 per side), and three (3) slotted rails on rear wall for attaching equipment panels.
- The door opening is single-flanged on top to prevent water drops when the door is open. The opening also includes a mount for two door-operated switches.
- Thermoconvection air ventilation system utilized with provisions for mounting fan for forced-air cooling. Exhaust outlet openings are provided under the roof overhang.
- All internal and external hardware utilizes non-corrosive material.
- Adjustable  $\frac{3}{8}$ "-diameter stainless steel door stop can be latched in various positions.
- Two (2) shelves included.



Eagle cabinets and accessories are built with the highest standards in quality and manufacturing. With a long standing history of technological innovations, well renowned customer service, and high quality products and services, Eagle is the leader in traffic technology products and solutions. For more information on our product line see our website at [www.browntraffic.com](http://www.browntraffic.com)