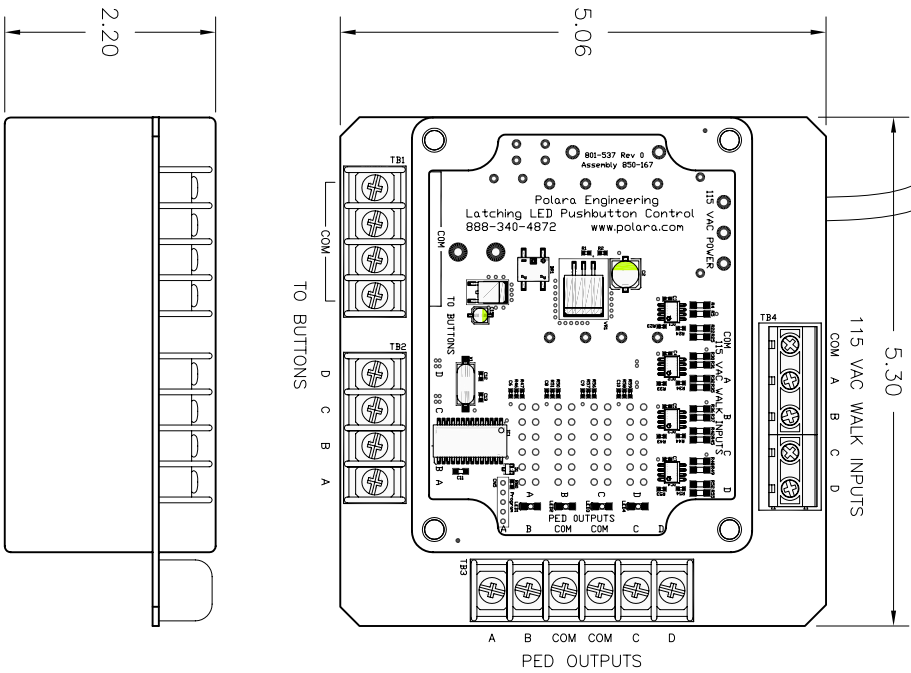


115 VAC POWER



DWG. NO.  
LPBCU

Latching Push Button Control Unit

The Polara LPBCU, when used with matching Polara BDLL2-X pushbuttons provides a pedestrian pushbutton system with a latching red light on each button. When any button on a phase is pressed, the light on all buttons on the same phase latch on until the associated pedestrian walk light turns on. The buttons are disabled while the walk light is on. At the end of the pedestrian walk cycle, the buttons are re-enabled and the process repeats.

The LPBCU installs inside the intersection control cabinet. It must be connected between the existing ped button field wires and the existing ped inputs to the intersection controller. The ped walk power (115 VAC) from the load switch also connects to the LPBCU. The power cord connects to a constant 115 VAC source to power the LPBCU.

The LPBCU supports 4 separate pedestrian phases and each phase can accept up to 5 pushbuttons, which operate on 18VDC nominal. The system works by monitoring the pushbuttons and the walk cycles. Except during a walk period, any button push causes an optically isolated relay to close in the LPBCU, which is detected by the intersection controller. The duration of the button push is detected and is directly transferred to the relay output. The relay outputs will handle .2A maximum.

Each of the 4 phases uses a plug-in module containing all of the phase specific components. Should a phase fail for any reason, simply install a new module to restore operation.

All inputs are optically isolated eliminating the need for additional ped isolation.

INFORMATION ON THIS DOCUMENT IS NOT BEING TO POLARA APPROVED OR DISCLOSED IN WHOLE OR IN PART WITHOUT WRITTEN CONSENT OF POLARA

REV. DATE	LTR	E.C.O. NO.	BY	CKR	ENG	DSN	MFG	QA	FINI
Revised	-	01/14/05							

<p><b>POLARA ENGINEERING INC.</b> 4115 W. ARTESIA AVE. FULLERTON, CA. 92833</p>		SCALE	1:2
TOLERANCES: .XXX ±.005 .XX ±.02 (EXCEPT AS NOTED)		SHEET	1 OF 1
DRAWN BY	CKR.	ENG. MGR.	MFG. MGR.
DATE	DSN. ENG.	Q.A. APP.	FINAL APP.
04-03-03			USE
TITLE			DWG. NO.
LATCHING PUSH BUTTON CONTROL UNIT			LPBCU