

Three Phase Power Quality Analyzer PowerPad™ Model 3945

PRELIMINARY



Waveform analysis of phase and neutral currents



Model 3945

SPECIFICATIONS	
MODEL	POWERPAD™
GENERAL SPECIFICATIONS	
Input Voltage	Phase to phase: 0 to 600V TRMS Phase to neutral: 0 to 480V TRMS
Input Current (depending on sensor)	MN clamp: 0 to 200A SR clamp: 0 to 1000A AmpFlex™: 0 to 6500A
Sampling Frequency	256 samples/cycle
Power Source	9.6V NiMH rechargeable battery pack AC: 110 to 230 VAC (50/60 Hz)
Battery Life	10 hrs
Display	Color LCD 320 x 240
Dimensions	7.09 x 9.46 x 2.17" (180 x 240 x 55mm)
Weight	3.3 lbs (1.5kg) with battery
Safety Rating	EN 61010, 600V, Cat. III
Pollution Level	2

- True Single and Three Phase measurements
- Real Time color display of waveforms including transients
- Easy on-screen graphics for setup
- True RMS Voltage and Current (600V, Cat III, 3000A)
- Display Voltage, Current and Power Harmonics to 50th Order, including direction, in real time
- Phasor Diagram Display
- Peak Voltage and Current
- Nominal Frequency from 40 to 70Hz
- VA, Var and W per phase and Total
- kVAh, Varh and kWh
- Neutral current
- Crest Factors for Current and Voltage
- K-factor for Transformer
- Power Factor, Displacement PF and Tangent
- Captures up to 50 transients
- Short-term Flicker and Voltage
- Phase unbalance (Current and Voltage)
- Harmonic Distortion (Total and Individual)
- Alarms, Surge and Sags
- Recording, date and characteristic of disturbances
- Immediate printout of the screen to a printer
- Screen Snapshot Function, captures waveforms
- Optically isolated RS-232 communication
- Includes DataView® Professional software to configure instrument, run tests and generate reports



PowerPad™ Model 3945 w/MN93 includes meter, set of three MN93 probes (200A), four 10 ft color-coded voltage leads, four color-coded alligator clips, RS-232 DB9F optical cable, NiMH battery, US 120V power cord, DataView® Professional software, carrying bag and user manual

Choose from a variety of current probe options



SR193 probes (1000A)



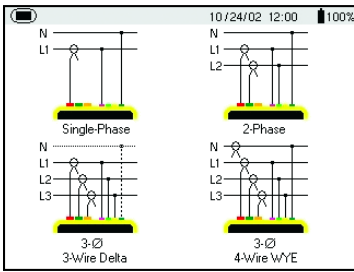
AmpFlex™ 193 probes (6500A)
(available in 24" or 36" lengths)



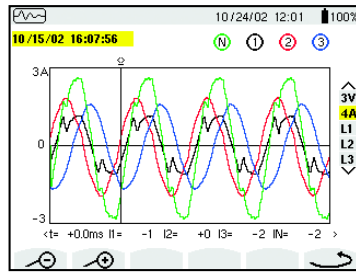
MN93 probes (200A) or
MN193 probes (5A/100A)

Large Color Display!

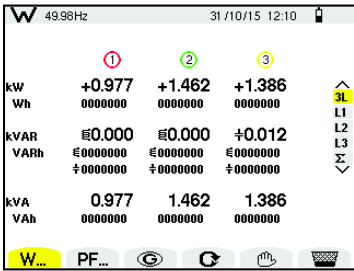
Configuration



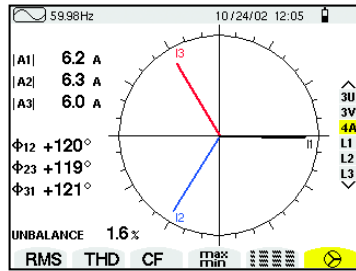
Transient Mode



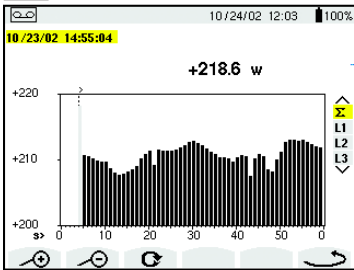
Power/Energy Mode



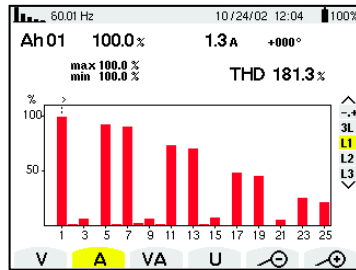
Phasor Diagram



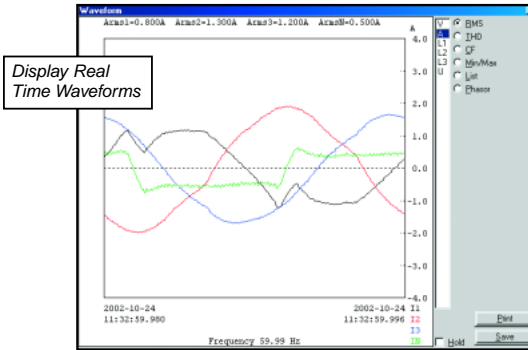
Recording Mode



Harmonics Mode



The screens above are a sample of the many available on PowerPad™



DataView®

Data Analysis and Reporting Software

a \$395 Value!



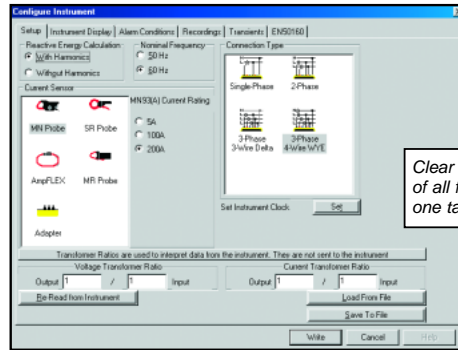
DataView® is included with the PowerPad™ Model 3945

Configure all functions of the PowerPad™

- Display and analyze real time data on your PC
- Configure all PowerPad™ functions and parameters from your PC
- Customize frames, templates and reports to your exact needs
- Create and store a complete library of configurations that can be uploaded to the PowerPad™ as needed
- Zoom in and out and pan through sections of the graph to analyze the data
- Display waveforms, trend graphs, harmonic spectrums, text summaries, transients and event logs
- Print reports using standard or custom templates you design

Minimum System Requirements:

- Windows®95/98/2000/ME/XP or Windows®NT 4.0
- 32MB of RAM (128MB recommended)
- 35MB of Hard Disk Space (200MB recommended)
- CD Rom drive



Clear and easy setup of all functions from one tabbed dialog box

CATALOG NO.	DESCRIPTION	
2130.75	PowerPad™ Model 3945 w/MN93 (200A)	\$3,695.00
2130.76	PowerPad™ Model 3945 w/SR193 (1000A)	\$3,795.00
2130.77	PowerPad™ Model 3945 w/24" 6500A AmpFlex™ Model 193-24	\$3,995.00
2130.78	PowerPad™ Model 3945 w/36" 6500A AmpFlex™ Model 193-36	\$4,195.00
Accessories (Optional)		
2140.09	Set of three color-coded MN93 (200A) Probes	\$ 419.00
2140.10	Set of three color-coded SR193 (1000A) Probes	\$ 659.00
2140.11	Set of three color-coded 24" 6500A AmpFlex™ Sensors – Model 193-24	\$ 659.00
2140.12	Set of three color-coded 36" 6500A AmpFlex™ Sensors – Model 193-36	\$ 959.00
2140.13	Set of three color-coded MR193 (1000Aac/1400Adc) Probes	\$ 769.00
2140.14	Set of three color-coded MN193 (5A/100A) Probes	\$ 519.00
2140.17	5A Adaptor box	\$ 695.00



Call the AEMC® Instruments Technical Assistance Hotline for immediate consultation with an applications engineer: **(800) 343-1391**

Chauvin Amoux®, Inc. d.b.a AEMC® Instruments • 200 Foxborough Blvd. • Foxborough, MA 02035 USA • (800) 343-1391 • (508) 698-2115 • Fax (508) 698-2118

Visit our website at www.aemc.com