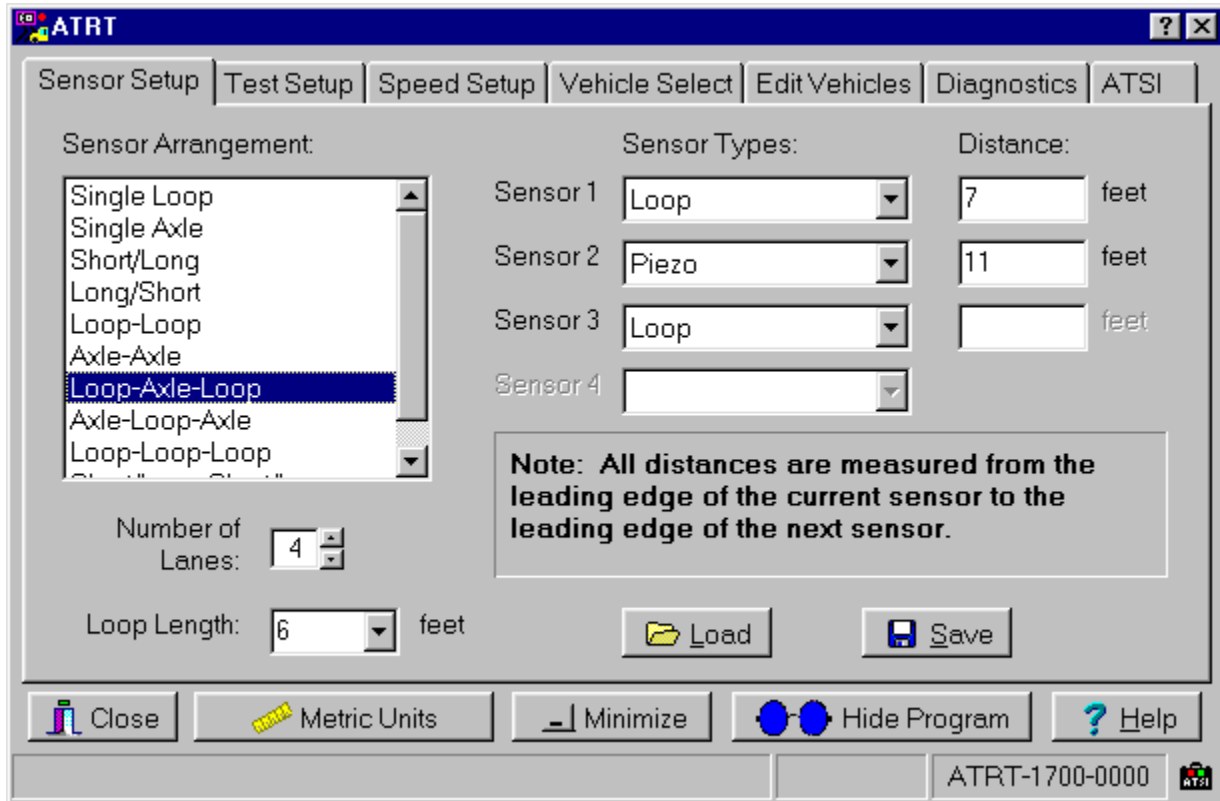


*How do you perform a comprehensive test on your counter/classifiers?
Are you looking for a way to comply with FHWA testing requirements?*

ATRT 1700 / 1150

Automated Traffic Recorder Testers



The highway traffic data recorder is responsible for the raw data upon which major decisions concerning funding and priorities are made. The accuracy of this data (or lack thereof) can have far-reaching effects.

- *How can the general operation and accuracy of the recorder be verified?*
- *If your agency repairs your counters, how are they checked following the repair?*
- *How can State agencies meet the FHWA requirement for the "...testing of equipment used in the collection of the data...used in the apportionment or allocation of Federal funds by the U.S. DOT"?* (Ref: 23 CFR Part 500.203)

The ATRT models 1700 and 1150 are designed to simulate any type of highway vehicle passing over a user defined array of highway traffic sensors. The user selects and groups vehicles to be generated by the outputs of the tester. Parameters such as test duration, vehicle speeds, vehicle definitions, traffic rates, and more can be defined with the aid of the Windows interface application.

The software is designed to work with either the Model 1700 or 1150



Athens Technical Specialists, Inc.
8157 US Route 50
Athens, OH 45701
Phone: (740) 592-ATSI (2874)
Fax: (740) 594-2875
E-mail: sales@atsi-tester.com

Download the software from our website: www.atsi-tester.com

Choose the Model 1700 for testing classifiers with multiple sensor inputs such as Piezo Strips, Air Tubes, Tape Switches, or Loops



Counter and computer shown are optional

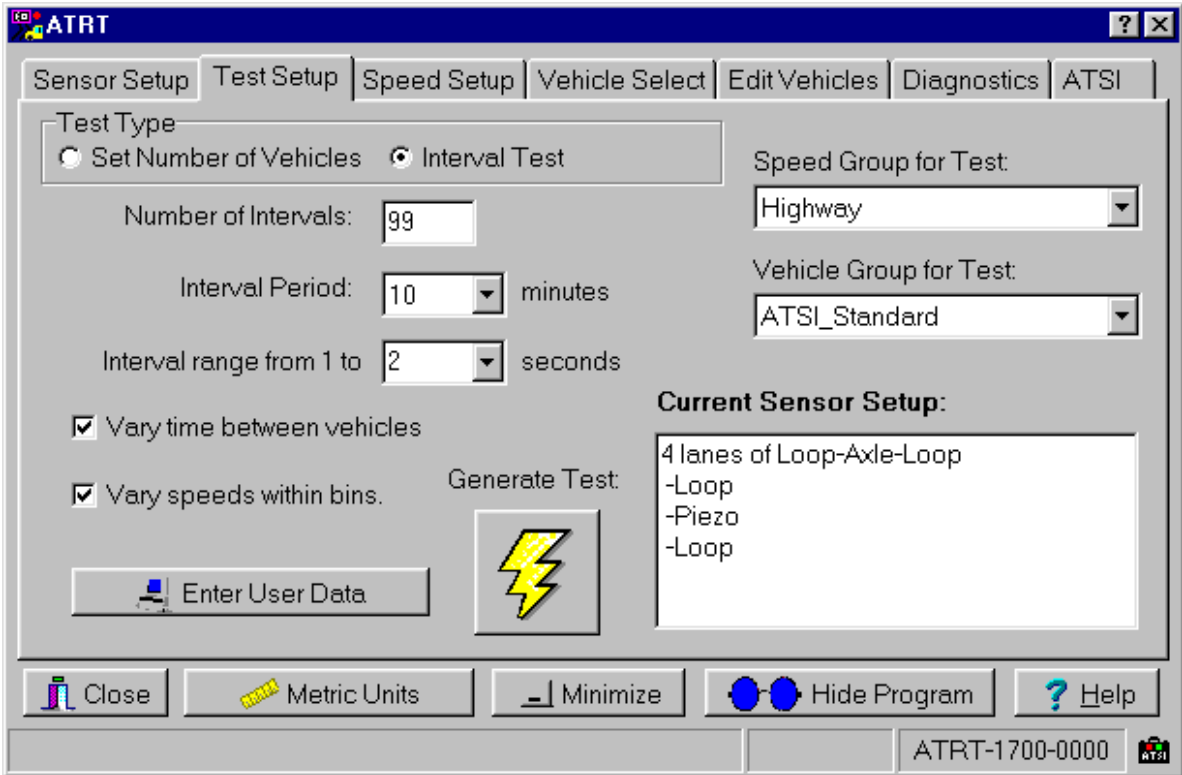
8 Sensor arrangements are available with 4 different sensor types:

- In Pavement Loop (8 each)**
- Piezo Sensor (8 each)**
- Air Tube (4 each)**
- Tape Switch Closure (8 each)**

Different sensor setups can be created and easily saved and loaded for quick test setups.

You can enter classifier data to appear on the generated test report: Manufacturer, Model, Serial Number, and space for you own additional notes. When the test is completed, the classifier report can be compared to the ATRT report for possible variances.

**Choose the Type of Test:
Set Number of Vehicles or an Interval Test**



**Or choose the Model 1150 for classifiers
or recorders with up to 4 air tubes**



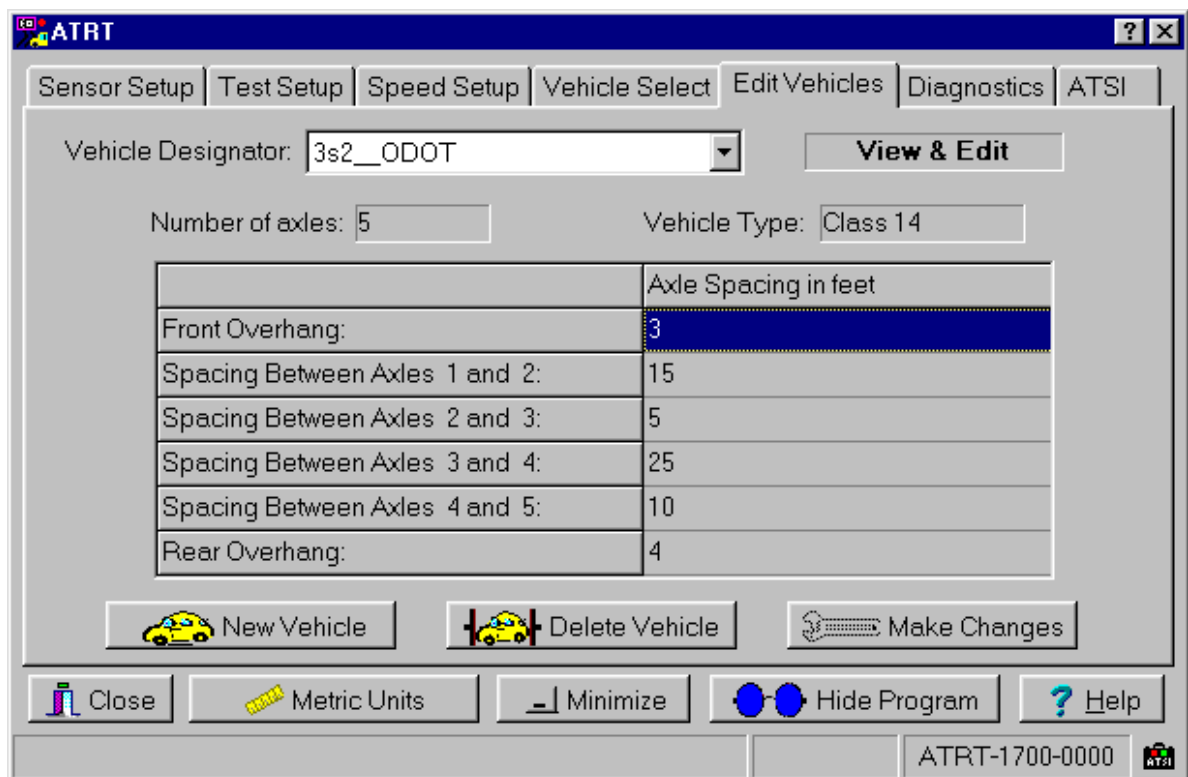
The Model 1150 has 4 Road Tube simulator outputs, which can be used singly or in combination to make up sensor arrays.

The peak output level is adjustable with a control knob on the tester top panel. The user interface software shall display a reading to the user to indicate the output level.

Counter and computer shown are optional

After the test is finished, review the generated data in the Report Viewer. The tab delimited reports are easily imported into any spreadsheet or word processing program.

**Edit or create your own vehicle class!
Can have up to 20 axles with 1 to 60 foot spacings**



Functions & Features Comparison Chart

Available Sensor Inputs	1700	1150
Inductive Loop (qty = 8)	Yes	-
Piezo Sensor (qty = 8)	Yes	-
Air Tube (qty = 4)	Yes	Yes
Tape Switch Closure (qty = 8)	Yes	-

Features

Simulates vehicle traffic sensor hits with millisecond-level accuracy	Yes	Yes
Simulated vehicle "signatures" are sent to the classifier inputs	Yes	Yes
Lanes of traffic that can be simulated in a single test	8	4
User selectable vehicle demographics (trucks vs. cars, cycles)	Yes	Yes
User definable vehicles by axle count and spacing	Yes	Yes
Pre-defined vehicles are included to match FHWA Scheme F	Yes	Yes
Setups can be saved and recalled by name for repeatability	Yes	Yes
Vehicle signatures sent to classifier/counter are grouped into speed bins	Yes	Yes
Test session can be divided into time intervals to match the classifier/counter	Yes	Yes
Report from Tester includes volume by lane, speed, class, etc.	Yes	Yes
Test results can be easily imported to a spreadsheet application for review/print	Yes	Yes
User matches report from classifier against report from tester to certify	Yes	Yes
Test session can be set up to last from 1 minute to 8 days	Yes	Yes
Diagnostic function allows each sensor to be activated under user control	Yes	Yes
Units of measure can be quickly changed from inch/feet/mile to metric	Yes	Yes
Single Vehicle mode tests how the classifier will classify a special vehicle	Yes	Yes

With so much riding on the data from your counters and classifiers, it makes sense to test their operation on a regular basis. The Federal Government actually requires that tested equipment be used in generating and recording highway volume data that is submitted to them for project funding purposes.

If a faulty tester is set up to collect data, you may not discover the problem until the first time that data is downloaded from the counter, if then. Avoid wasted time and money. Know your counter is going to work and the data will be accurate before sending the counter to the field. The ATRT testers perform a comprehensive test and create a test report to document the results.

Contact ATSI or your ATSI distributor for more information or visit our web site and download a demo version of the software to review.



Athens Technical Specialists, Inc.
 8157 US Route 50
 Athens, OH 45701
 Phone: (740) 592-ATSI (2874)
 Fax: (740) 594-2875
 E-mail: sales@atsi-tester.com

Visit our website: www.atsi-tester.com