

# CROSSWALKS FOR WALKABLE NEIGHBORHOODS





## RRFB TECHNOLOGY

Rectangular Rapid Flashing Beacons (RRFBs) are pedestrian-activated, high-intensity warning lights that notify drivers when a pedestrian is entering the crosswalk.

RRFBs are only for use in crosswalk applications. Specifically, RRFBs are appropriate for use at uncontrolled crosswalks (crosswalks marked with pedestrian, school, or trail crossing signs).

Rectangular Rapid Flashing Beacons are not intended for crosswalks that already have stop signs, yield signs or traffic control signals.



Rectangular Rapid Flashing Beacons can help reconnect existing walking and cycling routes in areas where pedestrian and vehicle traffic meet.

## AN EASIER WAY TO IMPROVE PEDESTRIAN ACCESS

Improving walkability doesn't have to mean significant infrastructure changes for a city. Every community has existing pedestrian-friendly routes. Often all that's required to improve their use is providing facilities that allow pedestrians to comfortably encounter the vehicle traffic that crosses their path.

Using FHWA-recommended Rectangular Rapid Flashing Beacons is one of the best and easiest ways to reconnect walkable routes, especially at crossings that exist away from traffic signals.



Rectangular Rapid Flashing Beacons are ideal for a range of applications:

- Intersections with thru-lanes on major legs
- Urban mid-block crosswalks
- Multi-lane crosswalk locations
- Roundabouts
- University campus crosswalks
- School zone crosswalks
- Greenways
- Trail crossings



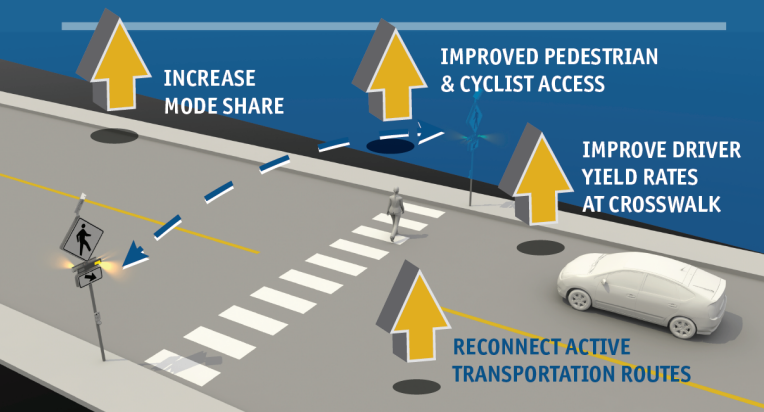
**EASY INSTALL**  
ONTO EXISTING SIGN POSTS.

**USE**  
EXISTING CREW  
AND EQUIPMENT



INSTALLATION TIME  
IN **MINUTES**  
**NOT HOURS**

**LIMITED**  
**BUDGETS GO FURTHER**



## FLASHING BEACONS: A RECOMMENDED IMPROVEMENT

Rectangular Rapid Flashing Beacons (RRFBs) are becoming an important part of the tool kit for professionals seeking to improve pedestrian service levels and multi-modal transportation access. In addition to appearing in pedestrian master plans across the US, RRFBs also appear in national design guides including The National Association of City Transportation Officials (NACTO) Bike Design Guide.

RRFBs are a recommended crosswalk improvement in multiple federal and state research reports including reports by:

- The U.S. Department of Transport Federal Highways Administration (FHWA)
- Transit Cooperative Research Program (TCRP)
- National Cooperative Highway Research Program (NCHRP)
- Oregon Department of Transportation (ODOT)

As crosswalk improvements continue to be an important element in creating sustainable communities, RRFBs have also been included in:

- Pedestrian master plans and design guidelines in major urban centers including Portland, OR; Philadelphia, PA; Chicago, IL; Boston, MA; and Washington DC.
- Pedestrian projects in suburban municipalities throughout the country

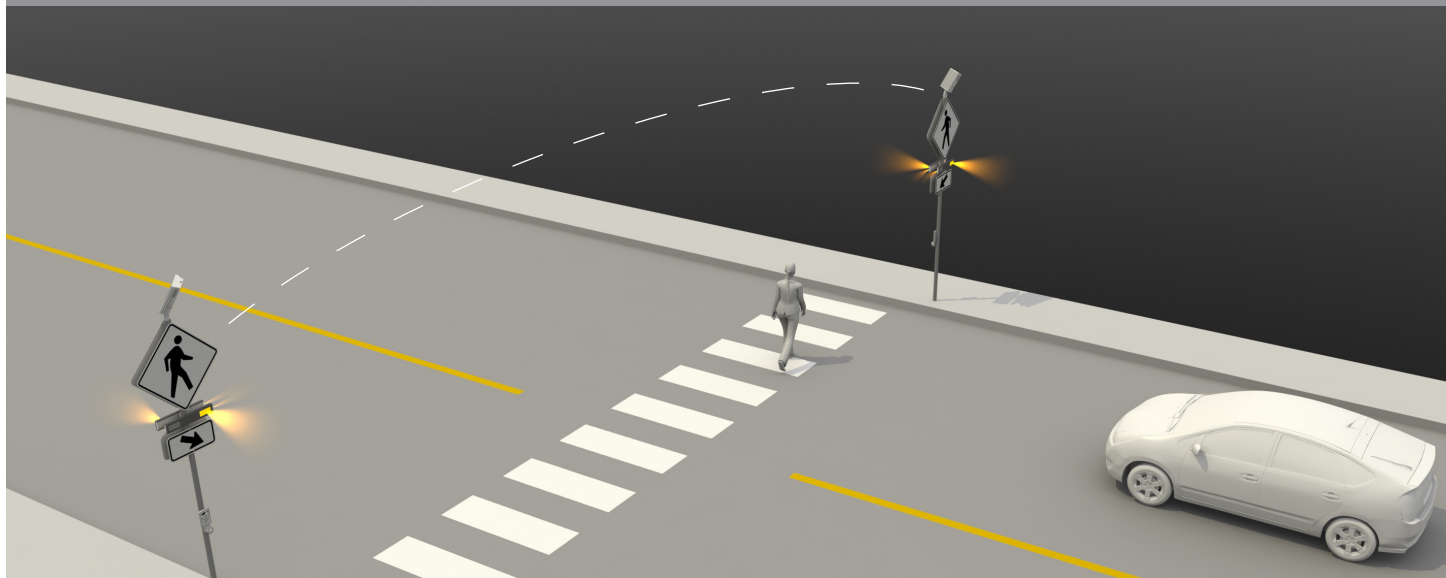
**Rectangular Rapid Flashing Beacons**  
improve driver yield rates up to 96%  
in some locations.

They also:

- Improve pedestrian safety even across wide, high-speed multi-lane roads
- Increase driver yield rates 73% over traditional beacon systems such as side-mounted and overhead beacons
- Maintain appropriate driver yield behavior over several years







Rectangular Rapid Flashing Beacons are installed on either side of the crosswalk along with a push button system that allows pedestrians to activate the beacons prior to crossing.

## CARMANAH TRAFFIC

Carmanah's mission is to provide active communities with affordable and accessible crosswalk solutions that improve the places people live, work and play. Carmanah crosswalk solutions are ideal for communities looking to transform their urban landscapes into vibrant, livable spaces shared by all modes of transportation. They are an ideal fit for Smart Growth America initiatives, Complete Street projects and communities seeking LEED ND certification.

Join our discussion on active transportation and urban planning.



Carmanah Traffic



@CarmanahTraffic



CarmanahTraffic



Carmanah is a proud sponsor of:



**Smart Growth America**  
Making Neighborhoods Great Together



**National Complete Streets Coalition**

**America Walks**  
ENGAGE. EDUCATE. CONNECT.

**Alliance**  
for  
Biking & Walking



**carmanah**<sup>®</sup>

Email: [customerservice@carmanah.com](mailto:customerservice@carmanah.com)  
Toll Free: 1.877.722.8877 (US & Canada)  
Worldwide: 1.250.380.0052  
Fax: 1.250.380.0062

[www.carmanah.com/traffic/crosswalks](http://www.carmanah.com/traffic/crosswalks)